

COVERS UP TO
6,400 ^{SQ} _{FT}
 OF LAWN FOR LAWN
 SURFACE INSECTS
 SEE BOOKLET FOR DIRECTIONS

**GUARANTEED
 RESULTS OR YOUR
 MONEY BACK***

For Outdoor Use
 Around the Home Only

Spectracide[®]

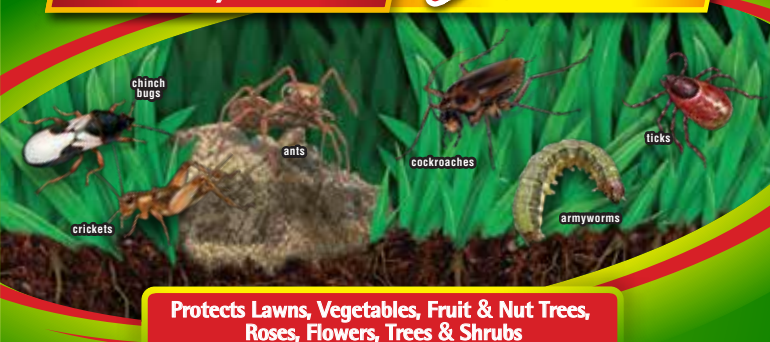
TRIAZICIDE[®]
INSECT KILLER

FOR LAWNS & LANDSCAPES

CONCENTRATE

**Kills 260+ Listed
 Insects By Contact**

Up To **3** Months* Control
 of pests



**Protects Lawns, Vegetables, Fruit & Nut Trees,
 Roses, Flowers, Trees & Shrubs**

Active Ingredient:
 Gamma-Cyhalothrin 0.08%
 Other Ingredients 99.92%
 TOTAL 100.00%

*For terms of guarantee,
 see back panel.

**KEEP OUT OF REACH OF CHILDREN
 CAUTION** See back booklet for additional
 precautionary statements.

*House crickets, carpenter ants, harvester ants,
 ladybeetles, earwigs; up to 4 weeks against fire ants

**MIX WITH
 WATER**

**Net Contents 40 fl oz
 (1 qt 8 fl oz/1.1 L)**

17-18016

PRECAUTIONARY STATEMENTS

Hazards to Humans and Domestic Animals

CAUTION. Harmful if swallowed. Wash hands thoroughly with soap and water after handling and before eating, drinking, chewing gum, using tobacco or using the toilet.

FIRST AID

If Swallowed: Call a Poison Control Center or doctor immediately for treatment advice. Have person sip a glass of water if able to swallow. Do not induce vomiting unless told to do so by a Poison Control Center or doctor. Do not give anything by mouth to an unconscious person. Have the product container or label with you when calling a Poison Control Center or doctor for treatment advice.

Environmental Hazards

This product is extremely toxic to fish. To protect the environment, do not allow pesticide to enter or run off into storm drains, drainage ditches, gutters or surface waters. Applying this product in calm weather when rain is not predicted for the next 24 hours will help to ensure that wind or rain does not blow or wash pesticide off the treatment area. Rinsing application equipment over the treated area will help avoid runoff to water bodies or drainage systems. Drift and runoff from treated areas may be hazardous to aquatic organisms in neighboring areas.

This product is highly toxic to bees exposed to direct treatment or residues on blooming crops or weeds. Do not apply this product or allow it to drift to blooming crops or weeds if bees are visiting the treatment area.

STOP. READ ENTIRE LABEL BEFORE USE.

RESEALABLE LABEL • PEEL HERE

Spectracide

TRIAZICIDE[®] INSECT KILLER
FOR LAWNS & LANDSCAPES
CONCENTRATE

PRODUCT FACTS

WHERE TO USE: *Outdoors around the home only*

WHAT IT DOES: *Kills ants**, fleas, chinch bugs, mosquitoes, sod webworms, aphids**, beetles, whiteflies, mites**, deer ticks, Japanese beetles, fire ants and other listed insects*
***See inside product booklet for complete pest list.*

Covers up to 6,400 sq ft of Lawn for Lawn Surface Insects
See booklet for directions.

Up to 3 Months Control of Pests*
**House crickets, carpenter ants, harvester ants, ladybeetles, earwigs; up to 4 weeks against fire ants*

Protects Lawns, Vegetables, Fruit & Nut Trees, Roses, Flowers, Trees & Shrubs *Non-Staining**

**Guaranteed Results or Your Money Back*
If you are not satisfied with this product for any reason, send your written request for a refund to the address below, together with the original dated store receipt showing the price you paid. Please allow 6-8 weeks for processing.

NOTE: This product is non-staining to most home siding depending on age and cleanliness. However, before using in areas where the spray may contact home siding (vinyl siding in particular), test in an inconspicuous area and recheck in a few hours. Do not use if any staining is observed.

QUESTIONS & COMMENTS: Call 1-800-917-5438 or visit our website at www.spectracide.com

NOTICE: To the extent consistent with applicable law, buyer assumes all responsibility for safety and use not in accordance with directions.

PROOF OF PURCHASE

FPO UPC
0 71121 55829 9

Product of Denmark
Distributed by Spectrum Group, Division of United Industries Corporation
PO Box 142642, St. Louis, MO 63114-0642
EPA Reg. No. 9698-277-8945
EPA Est. Nos. 9698-MD-1 (1), 89969-CA-1 (2), 53996-MD-1 (3)
Circled letter is first letter of lot number. 17-18017
© 2022 United Industries Corporation. All Rights Reserved.

STOP. READ ENTIRE LABEL BEFORE USE.

DIRECTIONS FOR USE

It is a violation of Federal law to use this product in a manner inconsistent with its labeling.



Do not allow children or pets into the treated area until dry.

- Do not water the treated area to the point of runoff.
- Do not make applications during rain.
- All outdoor applications must be limited to spot or crack-and-crevice treatments only, except for the following permitted uses:
 1. Treatment to soil or vegetation around structures
 2. Applications to lawns, turf and other vegetation
 3. Applications to building foundations, up to a maximum height of 3 ft. Other than applications to building foundations, all outdoor applications to impervious surfaces such as sidewalks, driveways, patios, porches and structural surfaces (such as windows, doors and eaves) are limited to spot and crack-and-crevice applications only.
- Application is prohibited directly into sewers or drains, or to any area like a gutter where drainage to sewers, storm drains, water bodies or aquatic habitat can occur. Do not allow the product to enter any drain during or after application.

In New York State, this product may not be applied to lawns within 100 ft of a coastal marsh, or stream that drains directly into a coastal marsh.

HOW TO MIX AND APPLY

- STEP 1: **Determine size of spraying job.** For lawns and vegetables, measure the area to be sprayed. For trees, shrubs and flowers, apply as a thorough cover spray. Make applications when insects first appear. Applications should be repeated only as directed to maintain control.
- STEP 2: **Use a clean sprayer.** Carefully measure and mix the amount of product and water as indicated in the directions. It is always a good idea to wear gloves when handling pesticides. **Kitchen utensils such as measuring cups and measuring spoons should not be used for food purposes after use with pesticides.**

STEP 3: **Spray** as directed. Thorough coverage is important.

STEP 4: Flush sprayer with clean water after each use.

See directions for list of use sites, plants and insects controlled. Use the rate given in the directions for the type of insect you want to control on the site or plant you are spraying.

MEASUREMENT CONVERSIONS

1 Tbsp = 3 tsp

1 fl oz = 6 tsp or 2 Tbsp

6 fl oz = $\frac{3}{4}$ cup

$\frac{1}{2}$ Tbsp in 3 gallons of water = $\frac{1}{2}$ tsp in 1 gallon of water

2 Tbsp in 3 gallons of water = 2 tsp in 1 gallon of water

†NOTE: This product is non-staining to most home siding depending on age and cleanliness. However, before using in areas where the spray may contact home siding (vinyl siding in particular), test in an inconspicuous area and recheck in a few hours. Do not use if any staining is observed.

LAWNS

SURFACE INSECTS including ants^{††}, armyworms, cockroaches, crickets[‡], cutworms[§], earwigs, fleas, ladybeetles^{****}, lawn moths (sod webworms), millipedes, mosquitoes, moths[∞], Palmetto bugs, sowbugs, mites[^], spittlebugs and waterbugs: Thoroughly wet down grass a few hours before applying. Mix 1.5 fl oz (3 Tbsp) in 1 gallon of water to cover 240 sq ft. Delay additional watering or mowing for 24 hours after application for optimum control of surface insects. For heavy infestations or to kill lone star ticks, brown dog ticks, American dog ticks and deer ticks (which may transmit Lyme Disease): Use rate can be increased to 6 fl oz/1,000 sq ft. Do not apply more than 14 times per year per location.

WHEN TO TREAT: Treat ants^{††} and other insects when they first appear or you notice lawn damage.

^{††} Argentine, southern, field, Allegheny mound, Florida carpenter, red carpenter, black carpenter, cornfield, honey, pavement, nuisance, odorous, pyramid, black turf, white-footed, crazy, little black, ghost, thief, acrobat, citronella, big-headed, lawn, lasius

[‡] House, common short-tailed, Indies short-tailed, Arizona, tropical, variable field, fall field, southeastern field, Texas field, spring field, northern wood, western striped, eastern striped, sand field, vocal field, southern wood

^{****} Convergent, seven-spotted, two-spotted, thirteen-spotted, twice-stabbed, Asian

[§] Black, bronzed, granulate, variegated, greasy, spotted, army, clover, green

[∞] Artichoke plume, gypsy, Zimmerman pine

[^] Banks grass, carmine, European, grain, Pacific, russet, spruce

FIRE ANT MOUNDS

Mix 3.0 fl oz (6 Tbsp) in 1 gallon of water and apply to each fire ant mound. Thoroughly wet the mound and surrounding area to a 4 ft diameter. For best results, apply in cool weather, 65°F to 80°F, or in the early morning or late evening. Kills the entire mound, including the queen, in 24 hours. Treat new mounds as they appear. Do not disturb the mound prior to treatment.

PESTS OUTSIDE THE HOME

For control of ants^{††}, cockroaches, crickets[‡], fleas, millipedes, mosquitoes, Palmetto bugs, sowbugs, pillbugs, spiders, deer ticks and waterbugs: Mix 1.5 fl oz (3 Tbsp) in 1 gallon of water and apply as a continuous band of insecticide around building foundation and around windows, doors, eaves, vents and other areas to greatly reduce the potential for entry by crawling pests. For easier application, remove debris and leaf litter from next to the foundation, cut back vegetation and branches that touch the foundation, and move or rake back rocks, deep mulch or other potential pest harborage next to the foundation. Apply a 3-foot band around the structure and upward along the foundation to 3 ft and around windows, doors and roof overhangs. Apply as a coarse spray to thoroughly and uniformly wet the foundation and/or band area so that the insecticide will reach the soil or thatch level where pests may be active. One gallon will treat 240 sq ft of surface area. Repeat

application every eight weeks.

OUTDOOR SURFACES USE: Mix 1.5 fl oz (3 Tbsp) in 1 gallon of water and apply as a residual treatment to ornamental plants next to foundations of buildings and to surfaces of buildings, porches, screens, window frames, eaves, patios, garages and other similar areas where these pests are active. Repeat application every eight weeks.

†† Argentine, southern, field, Allegheny mound, Florida carpenter, red carpenter, black carpenter, cornfield, honey, pavement, nuisance, odorless, pyramid, black turf, white-footed, crazy, little black, ghost, thief, acrobat, citronella, big-headed, lawn, lasius

¥ House, common short-tailed, Indies short-tailed, Arizona, tropical, variable field, fall field, southeastern field, Texas field, spring field, northern wood, western striped, eastern striped, sand field, vocal field, southern wood

ORNAMENTAL TREES, SHRUBS AND FLOWERS

For use on ornamental trees, shrubs and flowers such as but not limited to: Ageratum, Arborvitae, Arizona Cypress, Ash, Aster, Azaleas, Begonia, Birch, Boxwood, Box Elder, Camellias, Carnations, Cherry (ornamental), Non-bearing citrus, Chrysanthemums, Coleus, Common Ninebark, Conifers, Douglas Fir, Elm, English Ivy, Euonymus, Exacum, Fir, Gladioli, Gold Bells, Hawthorn, Holly, Honeysuckle, Hyposotes, Ivy, Juniper, Lilac, Locust, Maple, Marigold, Mimosa, Mock Orange, Nannyberry, Oak, Orchid, Palm, Pansy, Pea Shrub, Petunia, Philodendron, Pine, Ornamental Plum, Poinsettia, Poplar, Tulip Poplar, Rhododendron, Roses, Snapdragon, Snowberry, Spruce, Taxus, Weeping Fig, Willow, Zinnia.

To control ants††, aphids***, armyworms, azalea caterpillar, bagworms, black vine weevil (adult), box elder bugs, budworms, California oakworm, cankerworms, cockroaches, crickets¥, cutworms♁, eastern tent caterpillar, elm leaf beetles, European sawfly, fall webworm, flea beetles, forest tent caterpillar, gypsy moth larvae, Japanese beetles (adults), June beetles (adults), lace bugs, ladybeetles***, leaf-feeding caterpillars, leafhoppers\$, leafminers+ (adults), leafrollers#, leaf skeletonizers, midges, moths∞, oleander moth larvae, pillbug, pine sawfly, pine shoot beetles, pinetip moths, plant bugs, root weevil, sawfly, scale insects (crawlers), spiders, spittlebugs, striped beetles, striped oakworm, thrips, tip moth, tussock moth larvae: Mix 0.75 fl oz (1 ½ Tbsp) in 1 gallon of water.

To control broadmites, brown softscale, California reddscales (crawler), clover mites, mealybugs, pineneedle scale (crawler), spider mites and whiteflies: Mix 1.5 fl oz (3 Tbsp) in 1 gallon of water.

†† Argentine, southern, field, Allegheny mound, Florida carpenter, red carpenter, black carpenter, cornfield, honey, pavement, nuisance, odorless, pyramid, black turf, white-footed, crazy, little black, ghost, thief, acrobat, citronella, big-headed, lawn, lasius

*** Buckhorn, greenbug, pea, root, rose, walnut

¥ House, common short-tailed, Indies short-tailed, Arizona, tropical, variable field, fall field, southeastern field, Texas field, spring field, northern wood, western striped, eastern striped, sand field, vocal field, southern wood

♁ Black, bronzed, granulate, variegated, greasy, spotted, army, clover, green

**** Convergent, seven-spotted, two-spotted, thirteen-spotted, twice-stabbed, Asian

§ Mountain, rose, southern garden, variegated, variegated larvae, Virginia creeper, aster, six-spotted, elm, white-banded elm, sharp-nosed, blunt-nosed, red-banded, rice, eastern grape, potato, western grape + Corn blotch, alder, boxwood, holly, oak, spruce needle, tentiform, vegetable

Oblique-banded, red-banded, variegated
∞ Artichoke plume, gypsy, Zimmerman pine

USE TIPS

- For best results, apply early before insect populations are high.
- For scale control, treat entire plant, including stem, trunks and twigs.
- For bagworm control, apply when bagworm larvae begin to hatch.
- For best results, apply to both sides of plant leaves and all plant surfaces where insects are present.

VEGETABLES

Mix 1.5 fl oz (3 Tbsp) in 1 gallon of water and apply to 300 sq ft. Apply when insects appear or when damage occurs. Spray to wet all infested plant surfaces.

Do not apply more than five times per growing season to corn. For all other crops, do not apply more than nine times per growing season.

For use on Broccoli, Brussels Sprouts, Cabbage, Cavalo Broccoli, Cauliflower, Chinese Broccoli, Chinese Cabbage, Chinese Mustard and Kohlrabi to control: alfalfa looper, cabbage looper, imported cabbageworm, southern cabbageworm, cutworm♁, cabbage webworm, diamondback moth, armyworm, beet armyworm, fall armyworm, yellow-striped armyworm, corn earworm, flea beetle, Japanese beetle (adult), grasshopper, leafhopper\$, plant bug, including lygus bug, stink bug, meadow spittlebug, aphid***, whitefly, thrips, spider mite.

For use on Corn (sweet and pop) to control: cutworm♁, western bean cutworm, corn earworm, green cloverworm, meadow spittlebug, tobacco budworm, European corn borer, southwestern corn borer, stalk borer, hop vine borer, armyworm, beet armyworm, western corn rootworm beetle (adult), northern corn rootworm beetle (adult), southern corn rootworm beetle (adult), Mexican corn rootworm beetle (adult), bean leaf beetle, cereal leaf beetle, Japanese beetle (adult), sap beetle (adult), stink bug, grasshopper, corn leaf aphid, English grain aphid, chinch bug, green bug

Sweet Corn only: southern armyworm, western bean cutworm, tarnished plant bug, aster leafhopper, aphid***, spider mite, corn silktly (adult).

For use on Lettuce (head and leaf) to control: alfalfa looper, cabbage looper, imported cabbageworm, cutworm♁, saltmarsh caterpillar, green cloverworm, diamondback moth, armyworm, beet armyworm, fall armyworm, southern armyworm, corn earworm, tobacco budworm, European corn borer, flea beetle, Japanese beetle (adult), vegetable weevil (adult), grasshopper, leafhopper\$, plant bug, stink bug, meadow spittlebug, aphid*** whitefly, spider mite.

For use on Onion (bulb) and Garlic to control: cutworm♁, seedcorn maggot (adult), onion maggot (adult), leafminer+ (adult), armyworm, onion thrips, tobacco thrips, western flower thrips, flower thrips,

aphid*, plant bug, stink bug.**

For use on Tomato, Tomatillo, Peppers (bell and nonbell), Eggplant, Ground Cherry and Pepino to control: **cabbage looper, cutworm^β, hornworm, tomato fruitworm, tobacco budworm, tomato pinworm, beet armyworm, southern armyworm, yellow-striped armyworm, fall armyworm, European corn borer, leafminer[†], Colorado potato beetle, flea beetle, grasshopper, leafhopper[§], aphid***, whitefly, meadow spittlebug, stink bug, plant bug, stalk borer, blister beetle, Japanese beetle (adult), vegetable weevil, cucumber beetle (adult).**

For use on Asparagus Beans, Snap Beans, Wax Beans, Black-Eyed Peas, Garden Peas, Green Peas and Sugar Snap Peas to control: **cutworm^β, green cloverworm, imported cabbageworm, saltmarsh caterpillar, velvetleaf caterpillar, Mexican bean beetle, corn earworm, painted lady butterfly (larvae), European corn borer, looper spp., western bean cutworm, armyworm, yellow-striped armyworm, western yellow-striped armyworm, bean leafskeletonizer, webworm spp., leafy sp., alfalfa caterpillar, stalk borer, cucumber beetle (adult), corn rootworm beetle (adult), flea beetle (adult), blister beetle, bean leaf beetle, Japanese beetle (adult), leafhopper[§], fleas hopper spp., three-cornered alfalfa hopper, meadow spittlebug, stink bug spp., plant bug spp., grasshopper, thrips spp., aphid***.**

*** Buckhorn, greenbug, pea, root, rose, walnut

§ Mountain, rose, southern garden, variegated, variegated larvae, Virginia creeper, aster, six-spotted, elm, white-banded elm, sharp-nosed, blunt-nosed, red-banded, rice, eastern grape, potato, western grape

β Black, bronzed, granulate, variegated, greasy, spotted, army, clover, green

+ Corn blotch, alder, boxwood, holly, oak, spruce needle, tentiform, vegetable

For use on Apple, Crabapple, Loquat, Mayhaw, Oriental Pear, Pear and Quince to control: **leafhopper[§], codling moth, tufted apple budworm, Oriental fruit moth, lesser appleworm, green fruitworm, tent caterpillar spp., tentiform leaf miner spp., apple maggot (adult), pear sawfly, plum curculio, Japanese beetle, plant bug, stink bug, periodical cicada, apple aphid, rosy apple aphid, pear psylla, San Jose scale (on fruit only).**

For use on Apricot, Sweet Cherry, Tart Cherry, Nectarine, Peach, Plum (Chickasaw, Damson, Japanese), Plumcot and Prune to control: **leafroller[#], peach twig borer, Oriental fruit moth, peachtree borer spp., green fruitworm, tent caterpillar spp., American plum borer, cherry fruit fly spp. (adult), plum curculio, rose chafer, Japanese beetle, plant bug, stink bug, leafhopper[§], periodical cicada, black cherry aphid.**

For use on Almond, Beech Nut, Brazil Nut, Butternut, Cashew, Chestnut, Chinquapin, Filbert (Hazelnut), Hickory Nut, Macadamia Nut, Walnut (Black and English) and Pecan to control: **leafroller[#], navel orangeworm, codling moth, filbertworm, peach twig borer, walnut husk fly spp. (adult), ant^{††}, plant bug, stink bug, chinch bug, leaffooted bug, walnut aphid, hickory shuckworm, pecan casebearer spp., pecan weevil, pecan aphid spp., pecan spittlebug, pecan phylloxera spp.**

†† Argentine, southern, field, Allegheny mound, Florida carpenter, red carpenter, black carpenter, cornfield, honey, pavement, nuisance, odorous, pyramid, black turf, white-footed, crazy, little black, ghost, thief, acrobat, citronella, big-headed, lawn, lasius

§ Mountain, rose, southern garden, variegated, variegated larvae, Virginia creeper, aster, six-spotted, elm, white-banded elm, sharp-nosed, blunt-nosed, red-banded, rice, eastern grape, potato, western grape
Oblique-banded, red-banded, variegated

NUMBER OF DAYS TO WAIT BETWEEN THE LAST APPLICATION AND HARVEST	
VEGETABLES	PHI
Broccoli, Brussels Sprouts, Cabbage, Cavalo Broccoli, Cauliflower, Chinese Broccoli, Chinese Cabbage, Chinese Mustard, Kohlrabi, Lettuce (head and leaf)	1
Tomato, Tomatillo, Peppers (bell and nonbell), Eggplant, Ground Cherry and Pepino	5
Onions (bulb), Garlic	14
Corn (sweet and pop)	21
Asparagus Beans, Snap Beans, Wax Beans, Black-Eyed Peas, Garden Peas, Green Peas and Sugar Snap Peas	7
Lettuce (leaf and head)	1
PHI = Pre-Harvest Interval	

NUMBER OF DAYS TO WAIT BETWEEN THE LAST APPLICATION AND HARVEST	
FRUIT AND NUT TREES	PHI
Apple, Crabapple, Loquat, Mayhaw, Oriental Pear, Pear, Quince	21
Apricot, Sweet Cherry, Tart Cherry, Nectarine, Peach, Plum (Chickasaw, Damson, Japanese), Plumcot and Prune	14
Almond, Beech Nut, Brazil Nut, Butternut, Cashew, Chestnut, Chinquapin, Filbert (Hazelnut), Hickory Nut, Macadamia Nut, Walnut (Black and English) and Pecan	14
PHI = Pre-Harvest Interval	

FRUIT AND NUT TREES

Mix 1.5 fl oz (3 Tbsp) in 1 gallon of water and apply to 300 sq ft. Apply when insects appear or when damage occurs. Spray to wet all infested plant surfaces.

For fruit trees, do not apply more than nine times per year, and only apply five times after blooms have formed. For nut trees, do not apply more than six times per year, and only apply five times after blooms have formed.

STORAGE AND DISPOSAL

Pesticide Storage: Store in a cool, dry area away from heat or open flame.

Pesticide Disposal: If empty: Nonrefillable container. Do not reuse or refill this container. Offer for recycling, if available. If partly filled: Call your local solid waste agency for disposal instructions. Never place unused product down any indoor or outdoor drain.

STORAGE AND DISPOSAL

Pesticide Storage: Store in a cool, dry area away from heat or open flame.

Pesticide Disposal: If empty: Nonrefillable container. Do not reuse or refill this container. Offer for recycling, if available. **If partly filled:** Call your local solid waste agency for disposal instructions. Never place unused product down any indoor or outdoor drain.

PRECAUTIONARY STATEMENTS

Hazards to Humans and Domestic Animals

CAUTION. Harmful if swallowed. Wash hands thoroughly with soap and water after handling and before eating, drinking, chewing gum, using tobacco or using the toilet.

FIRST AID

If Swallowed: Call a Poison Control Center or doctor immediately for treatment advice. Have person sip a glass of water if able to swallow. Do not induce vomiting unless told to do so by a Poison Control Center or doctor. Do not give anything by mouth to an unconscious person.

Have the product container or label with you when calling a Poison Control Center or doctor for treatment advice.

Environmental Hazards

This product is extremely toxic to fish. To protect the environment, do not allow pesticide to enter or run off into storm drains, drainage ditches, gutters or surface waters. Applying this product in calm weather when rain is not predicted for the next 24 hours will help to ensure that wind or rain does not blow or wash pesticide off the treatment area. Rinsing application equipment over the treated area will help avoid runoff to water bodies or drainage systems. Drift and runoff from treated areas may be hazardous to aquatic organisms in neighboring areas.

This product is highly toxic to bees exposed to direct treatment or residues on blooming crops or weeds. Do not apply this product or allow it to drift to blooming crops or weeds if bees are visiting the treatment area.

NOTICE: To the extent consistent with applicable law, buyer assumes all responsibility for safety and use not in accordance with directions.

Questions & Comments? Call 1-800-917-5438 or visit our website at www.spectracide.com

Product of Denmark

Distributed by Spectrum Group, Division of United Industries Corporation

PO Box 142642, St. Louis, MO 63114-0642

EPA Reg. No. 9688-277-8845

EPA Est. Nos. 9688-MO-1(U)

89964-GA-1(E) 58996-MO-1(AE)

Circled letter is first letter of lot number.

17-18017

©2022 UIC. All Rights Reserved.